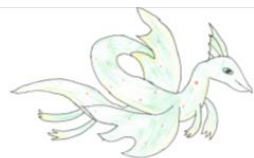
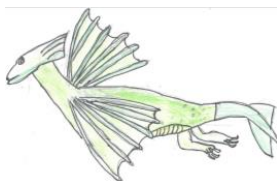




## Boreham Primary School A Friendship School

*'Daring to aim high, scale new heights, spread our wings and fly far'*



### SCHOOL UNIFORM POLICY

We believe that the wearing of school uniform gives children a corporate identity. It illustrates our high standards and allows children to be ambassadors for the school. Children feel proud to belong to our school and school uniform is a clear indication of this.

Boreham Primary School's policy is that children must wear school uniform at all times, the uniform they children are expected to wear is detailed below.

The school uniform consists of;

**Boys:** Grey/black trousers or shorts  
White shirt or polo shirt  
V or crew neck red sweatshirt  
Grey or black socks only

**Girls:** Grey/black skirt/pinafore dress/trousers  
White shirt or polo shirt  
V or crew neck red sweatshirt/cardigan  
Grey/red/blacks tights

**In Year 6 pupils are expected to wear a school tie.**

**PE:** White tee shirt and blue/black shorts and plimsolls or trainers  
An old track suit for cold weather

### **FOOTWEAR**

Please ensure that your child has sensible footwear, preferably flat shoes. **All school shoes should be black in colour.** Black trainers are not acceptable. Shoes with heels on, open-toed sandals and fur boots are also not allowed. It is not school policy for pupils to wear trainers to school but pupils can bring in trainers to wear at playtimes and lunchtimes only. If your child's school shoes are unavailable for a specific reason, a written request to wear alternative footwear should be made to the headteacher.

The following items of uniform (all of which have the school sun emblem) are available from the School Trends via their website:

<http://www.schooltrendsonline.com/schools/BorehamPrimarySchoolCM3DB/>

Crew Neck Sweatshirt  
V Neck Sweatshirt  
Cardigan  
Red Fleece  
White Polo shirt  
White Tee Shirt  
Baseball caps for summer  
Book Bag  
Lightweight waterproof coat  
Complete PE kit  
Red PE Bag

The school stocks ties for Year 6 pupils.

Children's clothing **must** be clearly labelled with your child's name. It is not possible for us to find or identify lost unnamed items of clothing.

## HAIR

If your child's hair is long, it should be tied up with a small band and small clips if necessary. Large Jo-Jo bows are not allowed but smaller **red/black** bows and hairbands are permitted.

Children are not permitted to attend school with coloured hair (unless this is for a specific non-uniform fundraising event). Children are also not permitted to attend school with any type of tramlines, channelling or symbols in their hair.

Jewellery, make-up and nail varnish are **not** allowed in school at any time. Watches may be worn and those **children with pierced ears must wear plain gold or silver studs only.** No earrings may be worn during swimming, PE or games lessons and children should be able to remove these independently. Watches and stud earrings will remain the responsibility of the child and **not** the school.

Parents should raise any concerns regarding the school uniform in the first instance with the Headteacher. The Governing Body will be receptive to complaints and work with parents to arrive at a mutually acceptable outcome.

Mr I R Bowyer  
Head teacher