

The Boreham Beacon



Issue No: 229

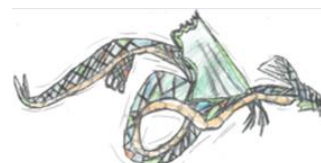
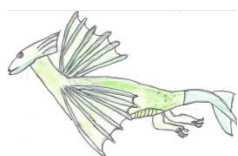
Date: Friday 5th April 2019

Menu: Week 1

Boreham Primary School

A Friendship School

'Daring to aim high, scale new heights, spread our wings and fly far'



~~~~~

## HEADTEACHER AWARDS

Reception: Cian

Year 1: Angel

Year 2E: Molly

Year 2D: Keira

Year 3: Charlotte

Year 4: Mason

Year 5: Holly T

Year 6: Rhys



## CLASS ATTENDANCE AWARD

The class with the best attendance for the academic year at the end of the spring term is our Year 6 class with 97.7% attendance. Our annual attendance target for the whole school for 2018-19 is 96.8%. Our current attendance figure for the whole school is 96.3%.

| Class | Attendance |
|-------|------------|
| EYFS  | 94.4%      |
| Yr 1  | 95.0%      |
| Yr2D  | 95.6%      |
| Yr2E  | 96.8%      |
| Yr 3  | 97.0%      |
| Yr 4  | 97.1%      |
| Yr 5  | 97.0%      |
| Yr 6  | 97.4%      |



**Perfect Attendance!**



**HOUSE POINTS** House points for the end of this term are:

**WATER:3824 AIR:3527 EARTH:3366 FIRE: 2777**  
We done to Team Water! Our Year 6 House Captains for Water are pictured with the House Points Cup.



## STAFF NEWS

We would like to congratulate Mrs Evans and Miss Fazal who are both expecting babies in early September.



Boreham Primary School

Tel: 01245 467625 Email: [admin@boreham.essex.sch.uk](mailto:admin@boreham.essex.sch.uk)

### TRI-GOLF SESSIONS & NEW GOLF CLUB!

Last Friday, our Yr 2-6 classes all got to experience a taster Tri-Golf session out on the field with Jack and Matt from The School Of Golf. Due to its popularity, Jack is going to start a before school golf club at Boreham which will run a Thursday morning before school, 8:00-8:40am on the school field. The club will be for Yr1-6 children. More details promoting the club and registering details will be sent out shortly.



### SCHOOL CLUBS REMINDER

All clubs for the summer term will commence week beginning; Monday 29<sup>th</sup> April.

### GIRLS FOOTBALL MATCH

**Boreham 0 - 5 St. Anne's**

Last Friday after school, our girls football team played at home to St. Anne's School. The girls, as ever, tried really hard.

Player of the match: Chloe Silvester



### HEALTHY HEROES TIP OF THE WEEK

**Nutrition Ninja says: 'Play with food'** - Even the pickiest of eaters are often more willing to try new foods when they are disguised as trains, boats, cars, bees, butterflies, or cows. To make a healthy penguin, dip a banana in a melted dark chocolate bar, add raisins or sultanas to make a beak and feet, and finish with a little shredded coconut for snow and eyes.



## JAM TART FUN IN RECEPTION CLASS!

Last Friday, our Reception class baked jam tarts. This was linked with their nursery rhyme topic and specifically The Queen of Hearts who made some tarts!



## ONLINE SAFETY TIP OF THE WEEK

### Choose to ask for help

If you are ever unsure about something you see online, or anything makes you feel worried, upset or confused then ask a trusted adult for some help and advice.

Remember our special school motto; *'Hurt Body, hurt feelings, tell a grown up.'*

If somebody hurts your feelings online then please report this to a member of staff in school



## TABLE OF THE WEEK

Congratulations to all of the children who were selected to be on last week's Table of the Week!





## POLITE PARKING NOTICE TO PARENTS

Whilst I acknowledge that the majority of our parents either walk their children to school, or if driving to school, park considerably, we have a small number of parents who continue to park unsafely and without any due regard for members of our school community and local residents. Can I please ask parents once again to NOT park across the dropped down kerb which is the ONLY safe place for parents to cross with their children, especially if they are pushing buggies too. The cones placed outside indicate where you should not be parking which includes after school too. Please also refrain from parking over local residents' driveways and parking in resident ONLY parking spaces.

Thank You

Mr Bowyer - Head Teacher



Remember the 3 parking rules or 3PR's

### 1 Care

- Be careful where you park
- Don't cause an obstruction
- Use a car park if available

### 2 Consideration

- Respect the school's parking policy
- Always consider the neighbours
- Don't block driveways
- Be polite and courteous
- If possible, walk or cycle instead

### 3 Caution

- Look out for other children, not just your own
- Always observe the speed limits
- Stay off the pavement

## BOOK FAIR SALES

Thank you very much to everyone who supported the school book fair last week. The total money spent at the book fair was £624.18, which meant the school had £314 to spend on books for the children! The librarians enjoyed choosing new books from the book fair with Miss Hill, which are now on the bookshelves in classrooms and in the library for children to enjoy reading. Thank you again for all your support and helping to update our bookshelves!



## Peanut and Nut Aware School

**Nuts, peanuts or any products containing nuts or peanuts are NOT allowed.**



**Please wash hands.**

**Clean hands help you to stay healthy and keep our friends safe.**

**Thank You!**

© www.thrivingwithallergies.blogspot.com

Boreham Primary School

Tel: 01245 467625 Email: [admin@boreham.essex.sch.uk](mailto:admin@boreham.essex.sch.uk)

## HIGH FIVE TOURNAMENT

On Monday evening Mrs Tate and Miss Hill took 16 Yr 5 and 6 children to Great Baddow High School for a mixed team tournament. We took two teams of eight, both teams being placed in different pools.

*'I was in Team Boreham B. We were in Pool 2 and played four matches. The first match we won 2-1, the second we drew 0-0, the third game we lost 8-0 but in our final game we won 1-0 and I scored the winning goal!'*

By Owen (Yr 5)

Our A Team finished in 4<sup>th</sup> place in Pool 1 and our B Team finished in 2<sup>nd</sup> place in Pool 2. Many congratulations to our B Team who will return for finals night at Great Baddow High School on Tuesday 30<sup>th</sup> April with Mrs Tate. Thank you to Mrs Tate and Miss Hill for accompanying the children to the tournament.



## CLASS PARENT WORKSHOP

On Friday 26<sup>th</sup> April at 9am class teachers from Years 1-6 will be delivering a workshop on See-Saw, a new online platform that we are using to display your children's work. This meeting will show you how you can access the platform from home. It is something we have already successfully launched in our Reception class with parents and we are now ready to roll this out to the rest of the school. All teachers will be delivering the same information, so you only need to attend one session regardless of how many children you have in the school.

Please make every effort to attend. By understanding how to access See-Saw this will enable you to view your child's work and activities they have been involved in within school at home.

## SCHOOL OPENING TIMES / LATENESS

From the beginning of the summer term we will be expecting children to be in class and settled by **8:50am**. Currently, we are allowing parents up until 8:55am to get their child into class **but from the summer term onwards anyone arriving after 8:50am will need to sign in at the main office.** You may have already noticed that class teachers are opening their main doors at the earlier time of 8:45am. This is now a permanent arrangement which will mean that parents can leave the school premises earlier than before as we recognise that many of you have other commitments. Our full procedure is outlined below and is directly taken from our school attendance policy which has been reviewed recently with our full governing body.

### How we manage lateness

- School gates open at 8:40am.
- Class teachers open their doors at 8:45am for children to enter the classroom.
- The school gates are locked at 8:55am once parents have left the playground.
- Registers are taken at 8:50am.
- **Children arriving after 8:50am must be registered in the school office.**
- Parent must contact school by 9:15am to report absences.
- If your child arrives between 8:50am - 9:30am they will receive a late mark.
- After 9:30am the registers will be closed. If your child arrives after this time they will receive a mark that shows them to be on site, but this will **not** count as a present mark and it will mean they have an unauthorised absence. This may mean that you could face the possibility of a Penalty Notice if the problem persists.

### Lateness

Poor punctuality is not acceptable. If a child misses the start of the day they can miss work and do not spend time with their class teacher receiving vital information and news for the day. Late arriving pupils also disrupt lessons, can be embarrassing for the child and can also encourage absence. Good time-keeping is a vital life skill which will help our children as they progress through their school life and out into the wider world.

## SUPPORTING SCHOOL ATTENDANCE

- Ensure that your child attends school regularly and is in school on time every day BY NO LATER THAN 8:50AM.
- Encourage children to take pride in being on time for events out of school too.
- Unless in absolute exceptional circumstances, do not request for leave of absence during term time.
- Health supports attendance - ensure the correct balance between diet and exercise.
- Stay hydrated, make water the choice of drink. Sugary drinks should be for treats for children only in small quantities.
- Sleep - regular routines especially on school nights. Ensure children recognise the importance and enjoyment gained from a good night's sleep!
- Be aware of the school's attendance policy on the school website.
- Ensure that children have their flu immunisation offered by the school.
- Re-inforce the importance of good personal hygiene and washing hands so not to spread germs and infection.

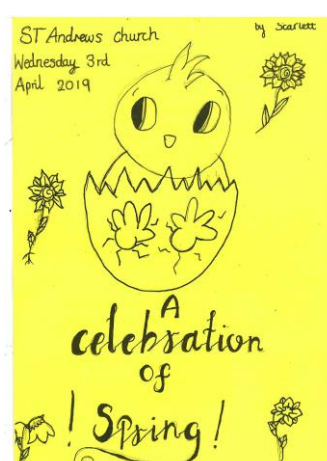
### Recommended Sleep by yr group (hours)

| YR                  | Y1                    | Y2                                  | Y3                                  | Y4                    | Y5                   | Y6                   |
|---------------------|-----------------------|-------------------------------------|-------------------------------------|-----------------------|----------------------|----------------------|
| 11-11 $\frac{1}{2}$ | 10 $\frac{3}{4}$ - 11 | 10 $\frac{1}{2}$ - 10 $\frac{3}{4}$ | 10 $\frac{1}{4}$ - 10 $\frac{1}{2}$ | 10 - 10 $\frac{1}{4}$ | 9 $\frac{3}{4}$ - 10 | 9 $\frac{1}{2}$ - 10 |



## EASTER SERVICE

Thank you to all parents and grandparents who were able to join us for Wednesday's spring celebration at St. Andrew's Church. It was a lovely service led by Christine Horton, which included readings from some of our Yr 5 and 6 children as well as a jazz percussion performance from Yr 6.



## GIRLS FOOTBALL DEVELOPMENT SQUAD

As the football season comes to an end, I would just like to congratulate the girls that took part in our football development programme that started back in January with our last session finishing on Thursday 28<sup>th</sup> March. Well done to you all for your commitment to the programme. We have watched you grow in confidence and ability to take you forward to further develop your football skills. It's been fantastic to hear that some of you have already played in our school matches, and with one match left after Easter; I personally look forward to witnessing just how skilled you've become! Finally, this programme could not have run without our wonderful volunteer Miss Hollox! We are truly grateful for the 10 weeks of voluntary time given to Boreham Primary School. Miss Hollox has been an inspiration to our girls, and has delivered an excellent development programme. We are delighted that Miss Hollox will be returning in September too! Huge thanks.

Mrs C Panks - School Sports Officer.



## INFANT MUSIC FESTIVAL

We were treated to a super performance of 'The Sultan's Bath' on Wednesday afternoon. The whole of KS1 performed their lines and sang beautifully. Thank you to everybody who purchased tickets and for the very kind donations. All monies raised will go directly back to providing our children with additional music experiences. Huge thanks to all of the KS1 teaching and support staff for their hard work in putting this production together as well as our volunteer, pianist, Mrs Long.



Come along to our new kids club to have LOADS of fun in the holidays with your friends while learning a new skill...

## EASTER KIDS CLUB

For children in Year 1-6

Only £15.00 per day!



Football Coaching with our experienced Coach...

Improve ball Skills, Passing, Penalty taking, and play fun mini matches with your team mates at the end of each day!



Arts and Crafts...

Design and make your own masterpiece, exploring different materials, learning about natural resources and fun artistic methods while getting messy and creative!



Boreham Scout HQ, behind Boreham Village Hall  
Wednesday 17th and Thursday 18th April 2019  
8.45am-3.15pm

Please bring your own packed lunch and drinks. Also if you're coming for the football fun, please wear shin pads!



Contact  
Michelle Collier  
07752143134  
OR  
On Facebook

**HAPPY EASTER FROM US ALL AT  
BOREHAM PRIMARY SCHOOL**

## ROCK STEADY CONCERT

Yesterday afternoon we were entertained in our termly Rock Steady Concert. Each band performed with great enthusiasm and confidence and there was also a very moving solo performance from Jack B in Year 6. Well done to 'The Dream Girls', 'Rock Forest', 'Lion Army' and 'Infinity M'.



Meet 'The Dream Girls' new Road Manager! We're going on a world tour with Boreham Bear!

## WHERE OH WHERE IS BOREHAM BEAR?

This week Boreham Bear went out to join children, parents and staff on our active all-weather track.



Come and join us every Monday and Friday morning between (8:30-8:45am) on our all-weather active track.



©Prawny \* illustrationsOf.com/214857

## YEAR 1 HABITATS

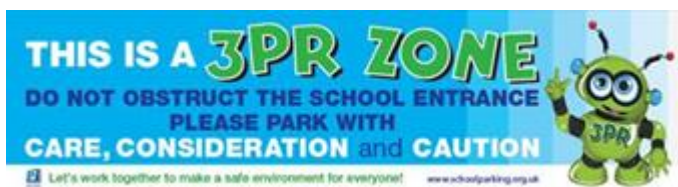
Our Year 1 class have been making some amazing habitats for their half termly homework!



Well done, Year 1 Class! They are amazing!



## 3PR CUP MONTHLY WINNER



The winners of the 3PR Cup for the month of March are our Year 4 Class! Well done, Year 4

Year 4: 128 Year 1: 125 Reception: 120



Boreham Primary School

Tel: 01245 467625 Email: [admin@boreham.essex.sch.uk](mailto:admin@boreham.essex.sch.uk)